



Project Reference: _____

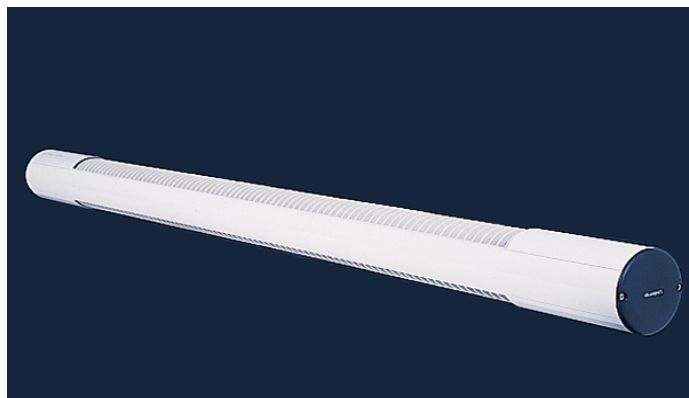
Fixture Type: _____ Cat. No: _____ Voltage: _____ Options: _____

MACROTUBE versatile high performance, low glare commercial fluorescent system

T8, T8/HO + Prog. Rapid Start electronic ballast

CSA, UL or equal

Structurally strong extruded aluminum housing with multiple easy-mounting options.



NEW FOR 2009

- ▶ Economy priced
- ▶ Suitable for cost-effective commercial, institutional and office lighting
- ▶ Adjustable mounting angle converts fixture easily into wall
- ▶ Various uplight / downlight configuration to match specification requirements

Accessories



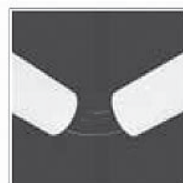
SUSPENSION KIT
Cat. # MTSK



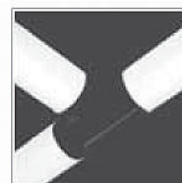
WALL BRACKET
Cat. # MTWB



STRAIGHT JOINT
Cat. # MTSJ



L - JOINT
Cat. # MTLJ



T - JOINT
Cat. # MTTJ



X - JOINT
Cat. # MTXJ

ORDERING INFORMATION

Catalog No.	Lamps	Watts	Max. Lumens	Dimensions
MT4-1F32	(1) F32T8	28.7	3100	102mm x 1610mm
MT4-2F32	(2) F32T8	57.8	6200	102mm x 1610mm
MT4-2F32HO	(2) F32T8	76.8	7300	102mm x 1610mm

Suffixes:

Voltage - **UNIV** (120 - 277V 50/60Hz)
- **347** (347V 60Hz)

Finishes - B (black)

- **W** (white)
- **M** (silver-metallic)

Mounting

Specify / order separately as per list above.
All joiners are in black injection molded polycarbonate

Up-Downlight

- **U** (90% uplight / 10% downlight)
- **D** (10% uplight / 90% downlight)
- **UD** 50% uplight / 50% downlight
- **(n)** n - number of custom uplight percentage.
Example: -30 means 30% uplight, 70% downlight

- rigid extruded aluminum fixture body
- polyester powder coated with UV-stabilised additive
- high performance, precision made Aluminum reflectors
- multicell ABS louvre prevents objectionable glare
- max. lamp life 46000 hours: Five years in 24hr operation
- common T8 version consumes only 58 Watts of energy
- polycarbonate twist-lock lamp holders - unbreakable!
- electronic HPF ballast 120V, 240V, 277V and 347V/60 Hz
- max. six years fixture warranty
- CSA, UL or equivalent

Specifications are subject to change without notice

QUESTIONS? Please call customer service at 1-800-49-LAMPS (800-495-2677) or contact your local VALUELIGHT representative