

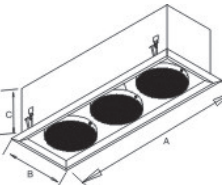
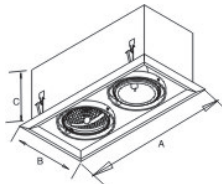
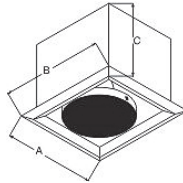


Project Reference: \_\_\_\_\_

Fixture Type: \_\_\_\_\_ Cat. No: \_\_\_\_\_ Voltage: \_\_\_\_\_ Finish: \_\_\_\_\_

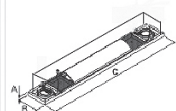
**TECNO** recessed adjustable HID and halogen PAR30 combos  
**high performance commercial / retail display lighting**

CDM-T G-12      CDM-R PAR30      HALOGEN      PAR30/LN Medium Base



Model	Lamp	Dimension
<b>TECNO</b> NDLT 220/250	4x CDMR 39W	175 x 208 x 1298

\* Material: Aluminum  
\* Colour: silver grey frame  
\* remote electronic transformers and ballasts



120V/60Hz      CSA / UL or equivalent

**ORDERING INFORMATION**

Catalog No.	Lamps	Max.	Cutout (mm)	Dim. (mm)
<b>TECNO CDM1</b>	(1)CDM-T	150W	162x162	200x200x185
<b>TECNO PAR1</b>	(1)CDM-P30	70W	162x162	200x200x185
<b>TECNO P1</b>	(1)PAR30	70W	162x162	200x200x185

Catalog No.	Lamps	Max.	Cutout (mm)	Dim. (mm)
<b>TECNO CDM2</b>	(2)CDM-T	150W	345x170	385x208x175
<b>TECNO PAR2</b>	(2)CDM-P30	70W	345x170	385x208x175
<b>TECNO P2</b>	(2)PAR30	70W	345x170	385x208x175

<b>TECNO PAR2A</b>	<i>HID + HALOGEN</i>			
	(1)CDM-P30 70W + (1)PAR30	345x170	385x208x175	

<b>TECNO CDM2A</b>	<i>HID + HALOGEN</i>			
	(1)CDM-T 150W + (1)PAR30	345x170	385x208x175	

Catalog No.	Lamps	Max.	Cutout (mm)	Dim. (mm)
<b>TECNO CDM3</b>	(3)CDM-T	150W	475x160	517x200x175
<b>TECNO PAR3</b>	(3)CDM-P30	70W	475x160	517x200x175

<b>TECNO PAR3A</b>	<i>HID + HALOGEN</i>			
	(1)CDM-P30 70W + (2)PAR30	475x160	517x200x175	

<b>TECNO CDM3A</b>	<i>HID + HALOGEN</i>			
	(1)CDM-T 150W + (2)PAR30	475x160	517x200x175	

<b>TECNO PAR3B</b>	<i>HID + HALOGEN</i>			
	(2)CDM-P30 70W + (1)PAR30	475x160	517x200x175	

<b>TECNO CDM3B</b>	<i>HID + HALOGEN</i>			
	(2)CDM-T 150W + (1)PAR30	475x160	517x200x175	

- high quality, precise tolerances engineering
- heavy gauge steel housing, cast AL frame and lamp rings
- powder coated silver gray, optional white or custom
- remote f-can magnetic ballast (277V and 347V)
- automatically resetting thermal cutoff
- finishes: silver - grey - black - white - custom
- max. six years fixture warranty
- CSA, UL or equivalent

Specifications are subject to change without notice

**QUESTIONS?** Please call customer service at 1-800-49-LAMPS (800-495-2677) or contact your local VALUELIGHT representative